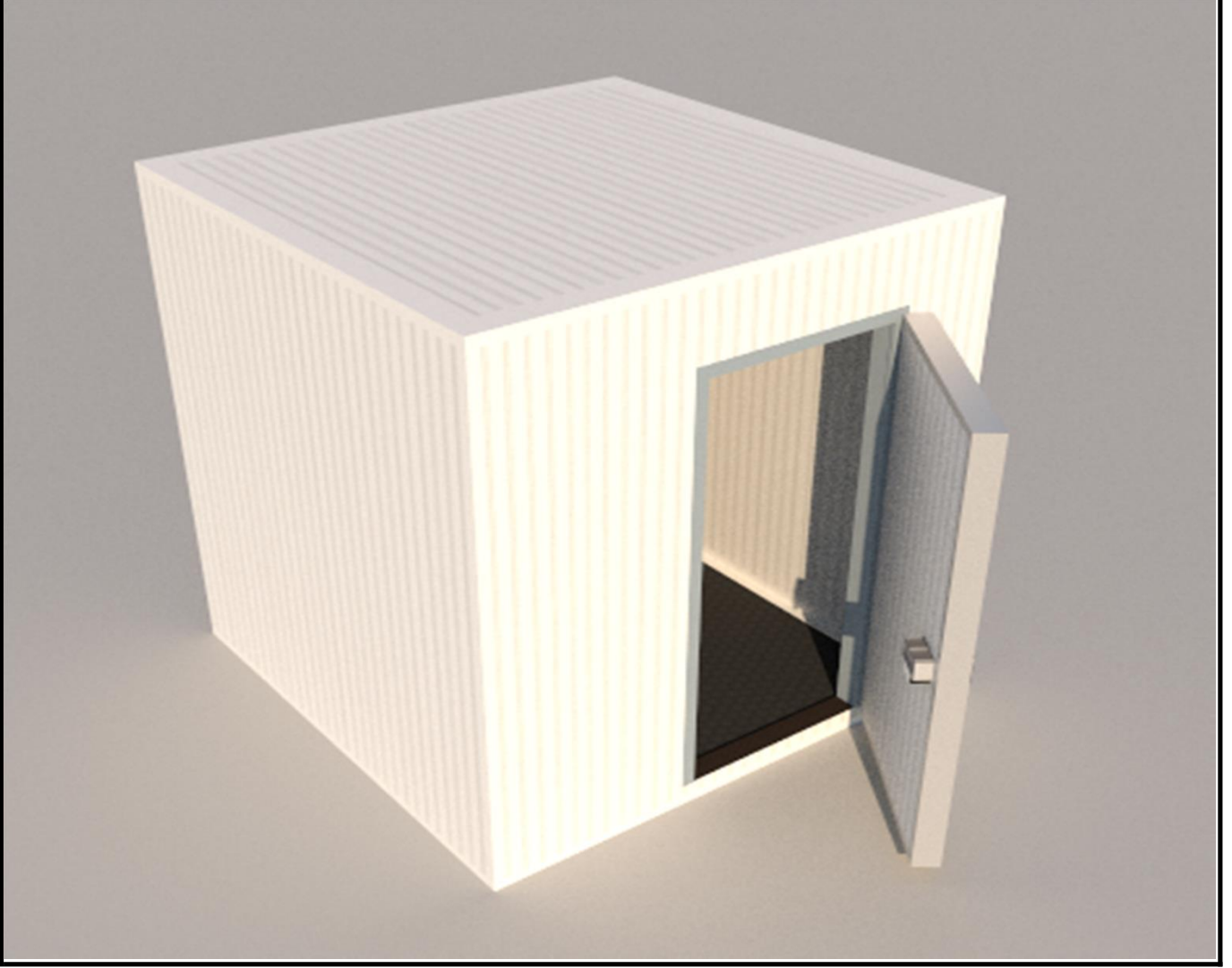




KORKMAZ PANEL

MODULAR ROOM MOUNTING GUIDE



KORKMAZ PANEL

Fabrika Genel Merkez

Organize Sanayi Bölgesi 2.Kısım 4.Cadde 9.Sokak No: 11

Sivas Merkez / TURKEY

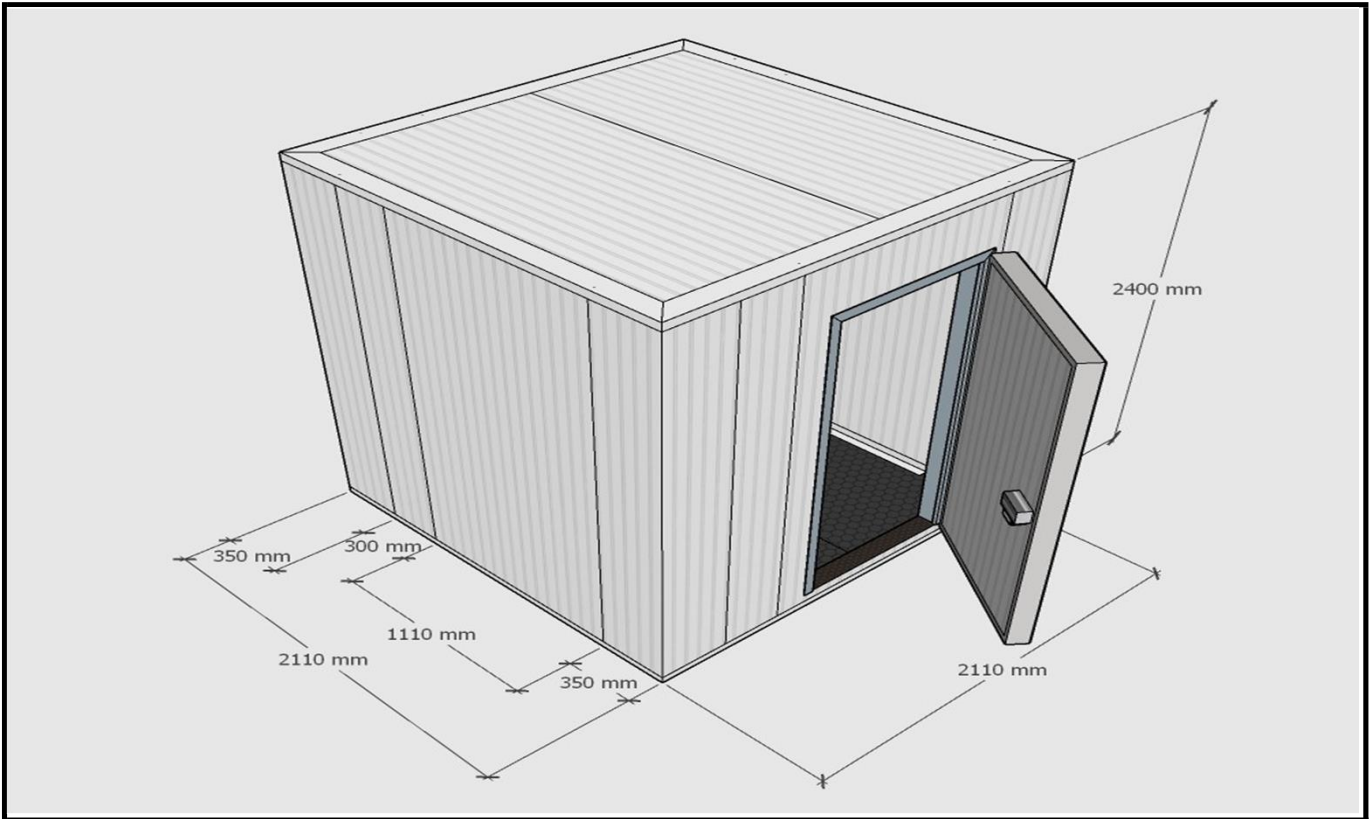
+90 (346) 218 11 87 (Pbx)

+90 (346) 218 13 50

info@korkmazpanel.com

www.korkmazpanel.com

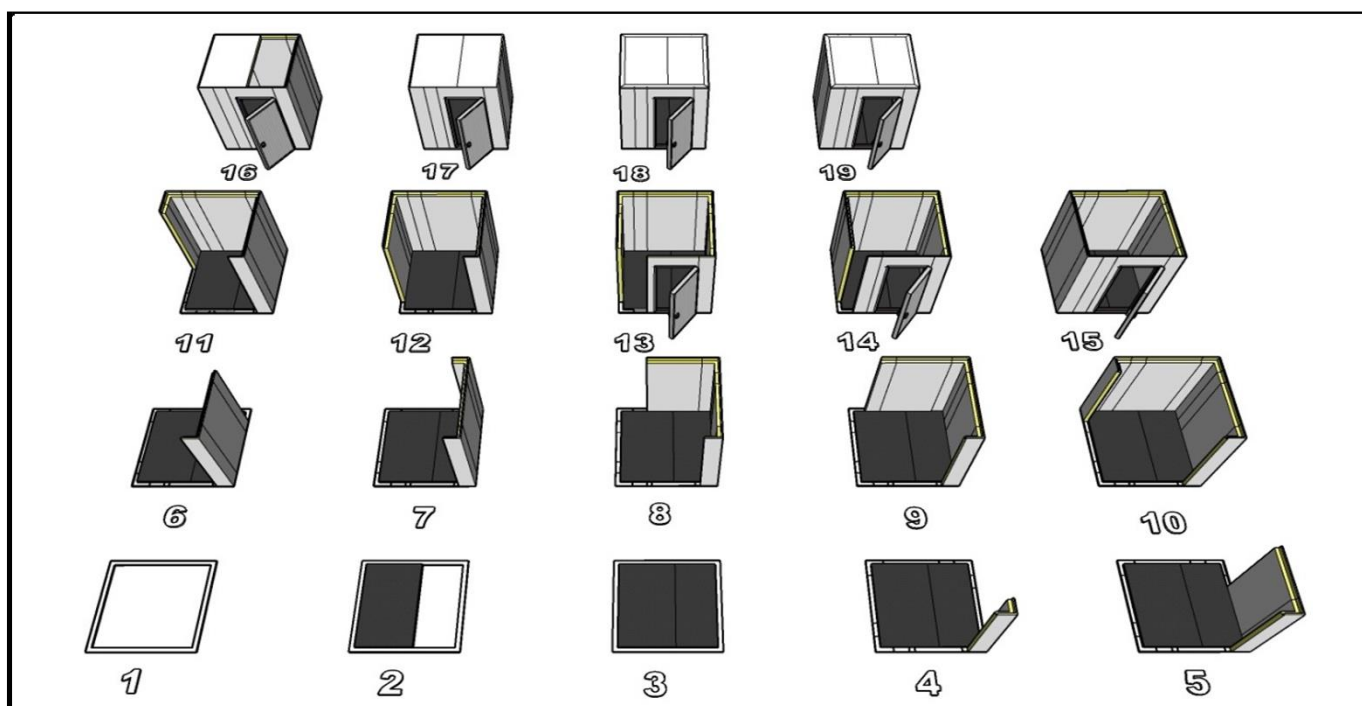
MODULAR ROOM MOUNTING MATERIALS



MODULAR ROOM MOUNTING MATERIALS

1	U profile	8,4 m
2	32,5 corner panel	4 pieces
3	30 Wall panel	2 pieces
5	111 Wall panel	3 pieces
6	Hinged door	1 pieces
7	Floor panel	2 pieces
8	Ceiling panel	2 pieces
9	panel Internal accessory 50*50	15,3 m
10	panel L accessory 50*110	8,4 m
11	Allen key 8	1 pieces
12	silicon	4 pieces
13	Foam	2 pieces
14	Rivet	50 pieces
15	ground for dayson silicone	1 pieces
16	stud bolt	10 pieces

INSTALLATION RANGE



INSTALLATION RANGE AND APPLICATIONS

Step 1	Mounting of U profiles on floor according to room size
Step 2	Floor panel will be placed at 1 position
Step 3	Floor panel will be placed at 2 position
Step 4	1 corner panel is placed
Step 5	111 wall panels placed and locked with corner panel
Step 6	30 wall panels is placed and will be locked with 111 wall panel
Step 7	2.The corner panel is placed and will be locked with 30 panel
Step 8	111 wall panels placed and locked with corner panel
Step 9	30 wall panels are placed and will be locked with 111 wall panel
Step 10	3 Corner panel is placed and will be locked with 30 panel
Step 11	30 wall panel is placed and will be locked with corner panel
Step 12	111 wall panels placed and will be locked with 30 panels
Step 13	111 panel mounting door is placed and will be locked with 1st corner panel
Step 14	30-wall panel is placed and locked with door panel
Step 15	4.The corner panel is placed in a wall panel of 30 lb and the wall panel is locked with 111
Step 16	ceiling panel will be places at 1st position
Step 17	Ceiling panel will be places at 2nd position and will be locked with 1st ceiling panel
Step 18	Installation of external accessories
Step 19	Installation of Internal accessories

MODULAR ROOMS CAN BE DESIGNED FOR REQUIRED PANEL THICKNESS AND REQUESTED ROOM DIMENSIONS.